

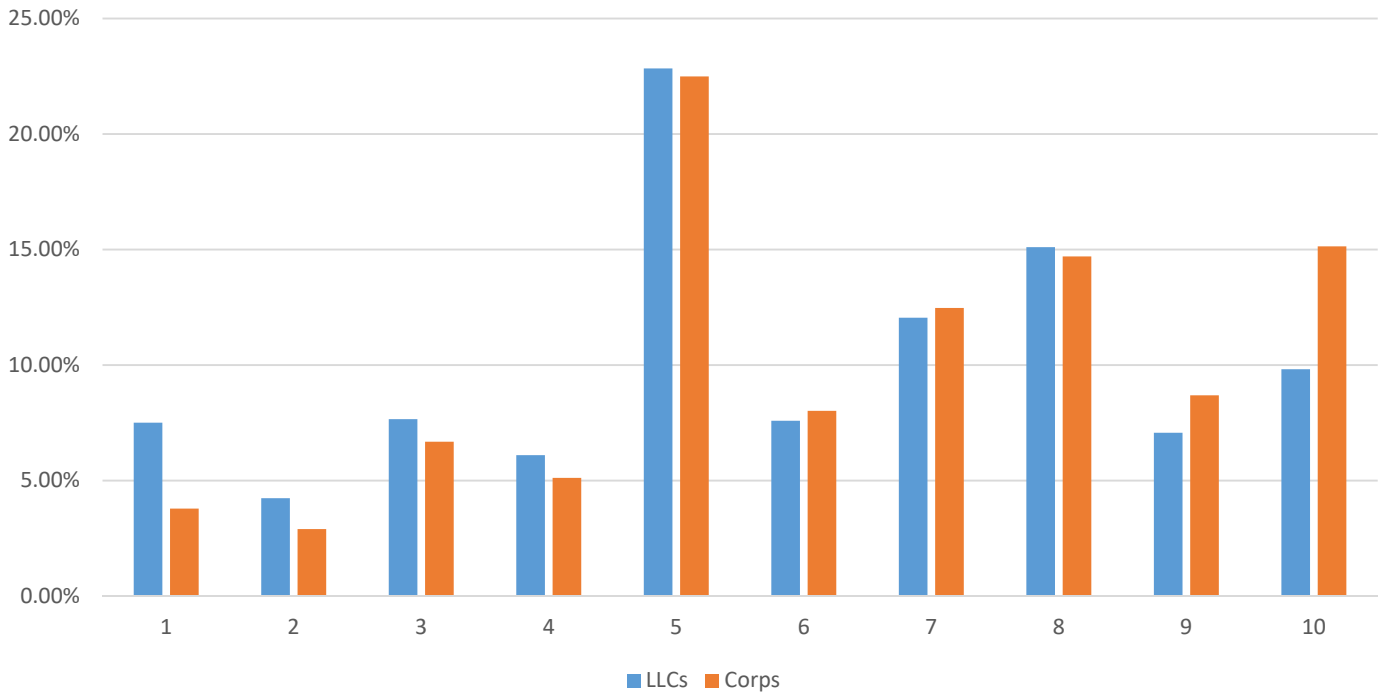


DELBERT HOSEMANN  
*Secretary of State*

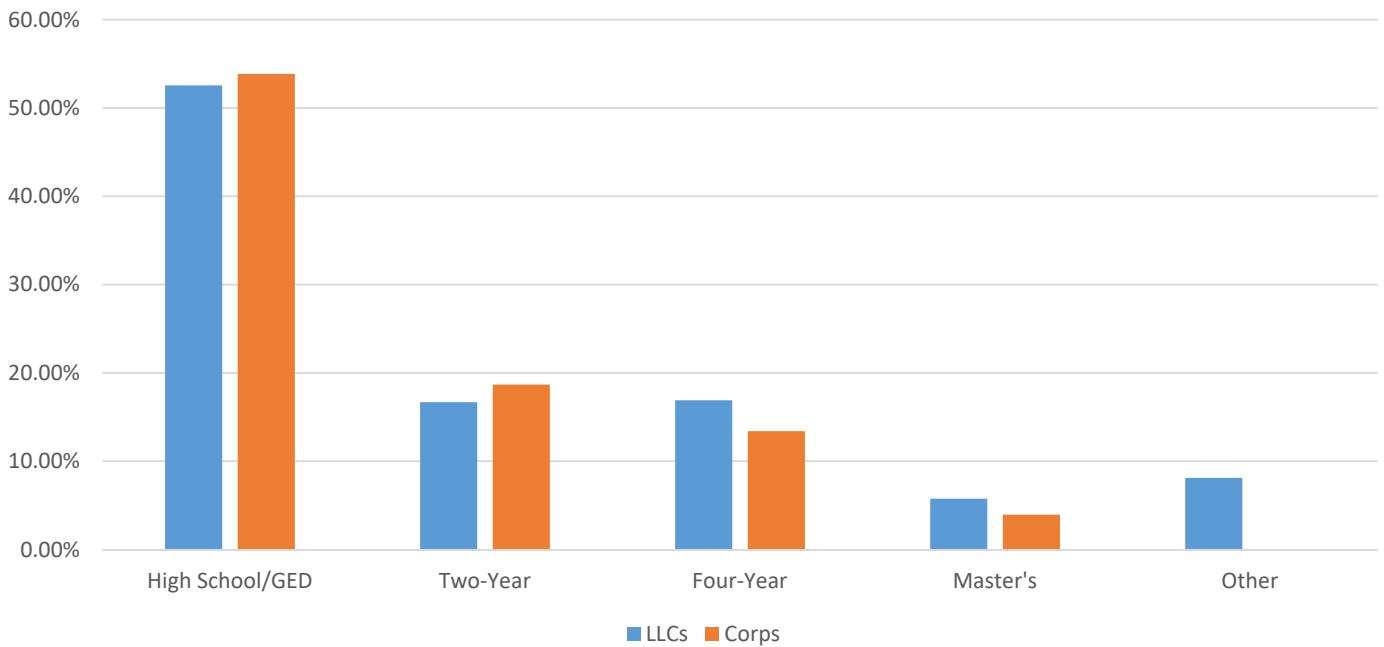
## **Y'all Business Survey**

November 2017

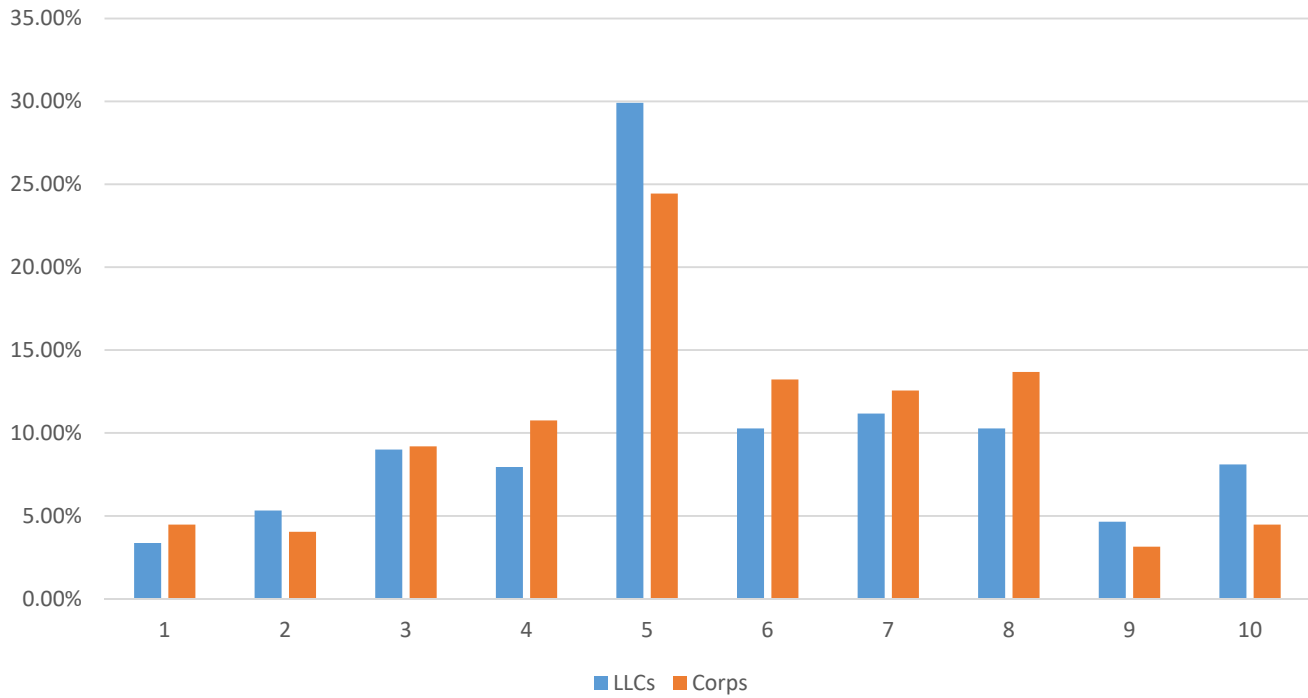
On a scale of 1 to 10, how difficult is it to find an educated workforce that fits the needs of your business (10 being the most difficult)?



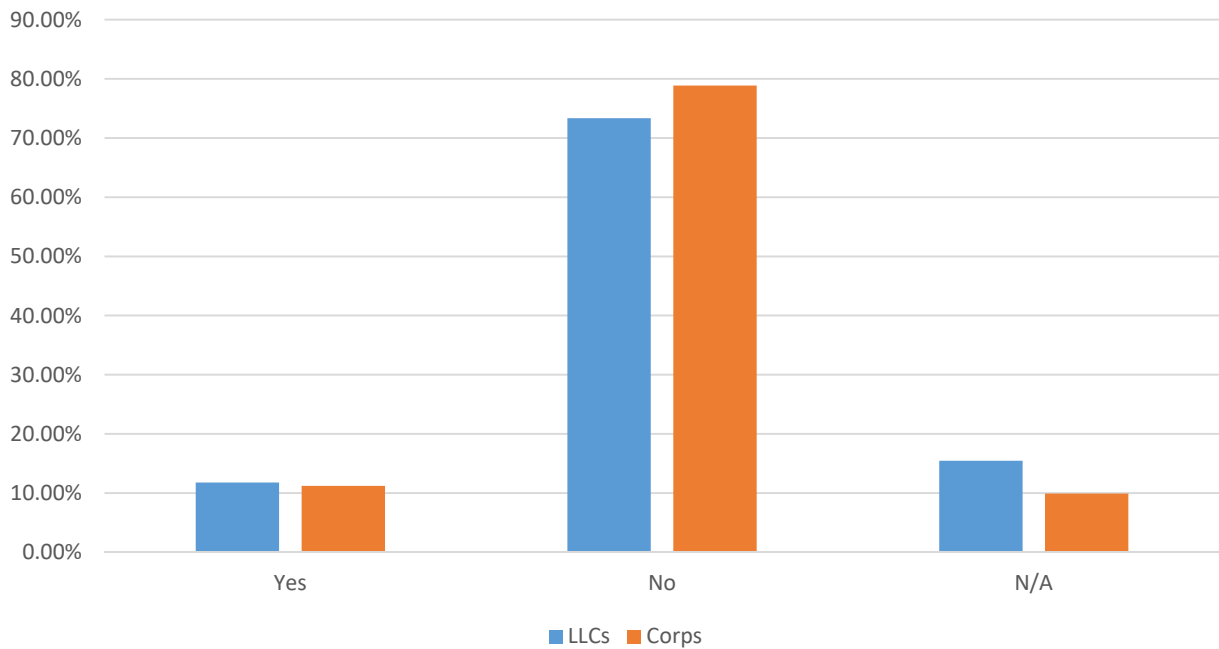
What is the highest level of education needed in the majority of jobs in your workforce?



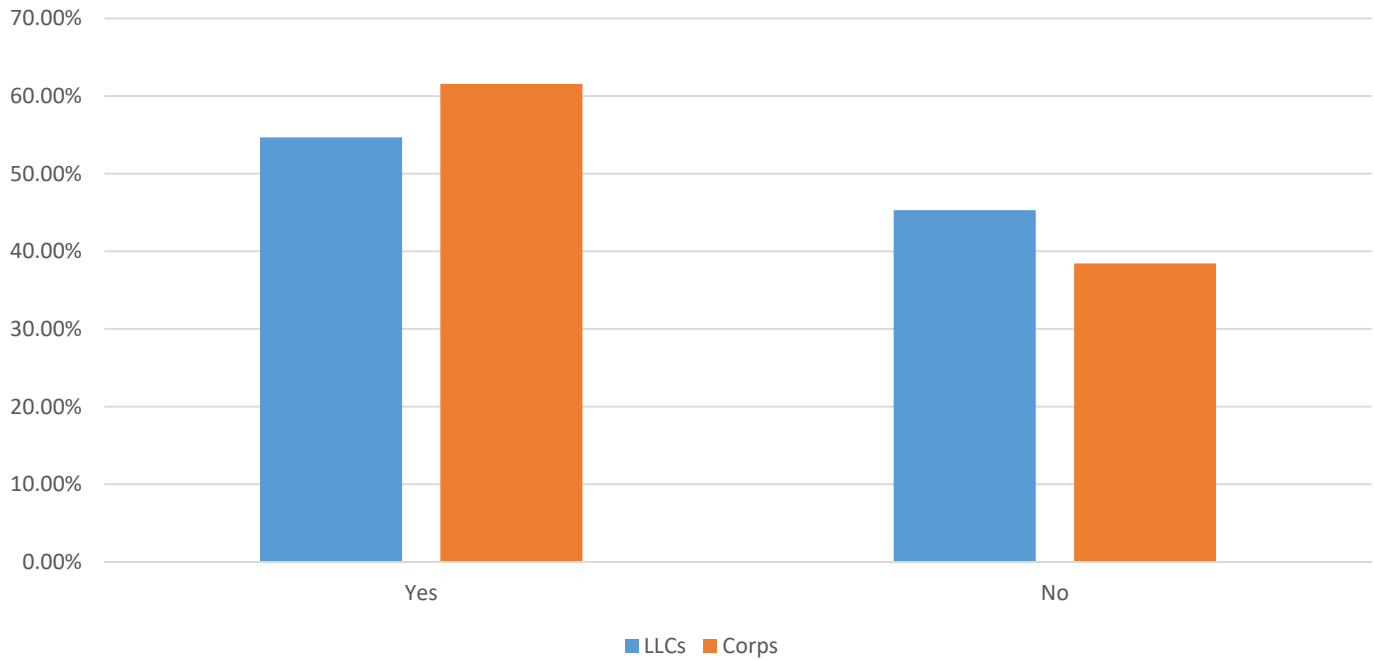
On a scale of 1 to 10, how technically skilled to your business are your newly hired employees (10 being the most skilled)?



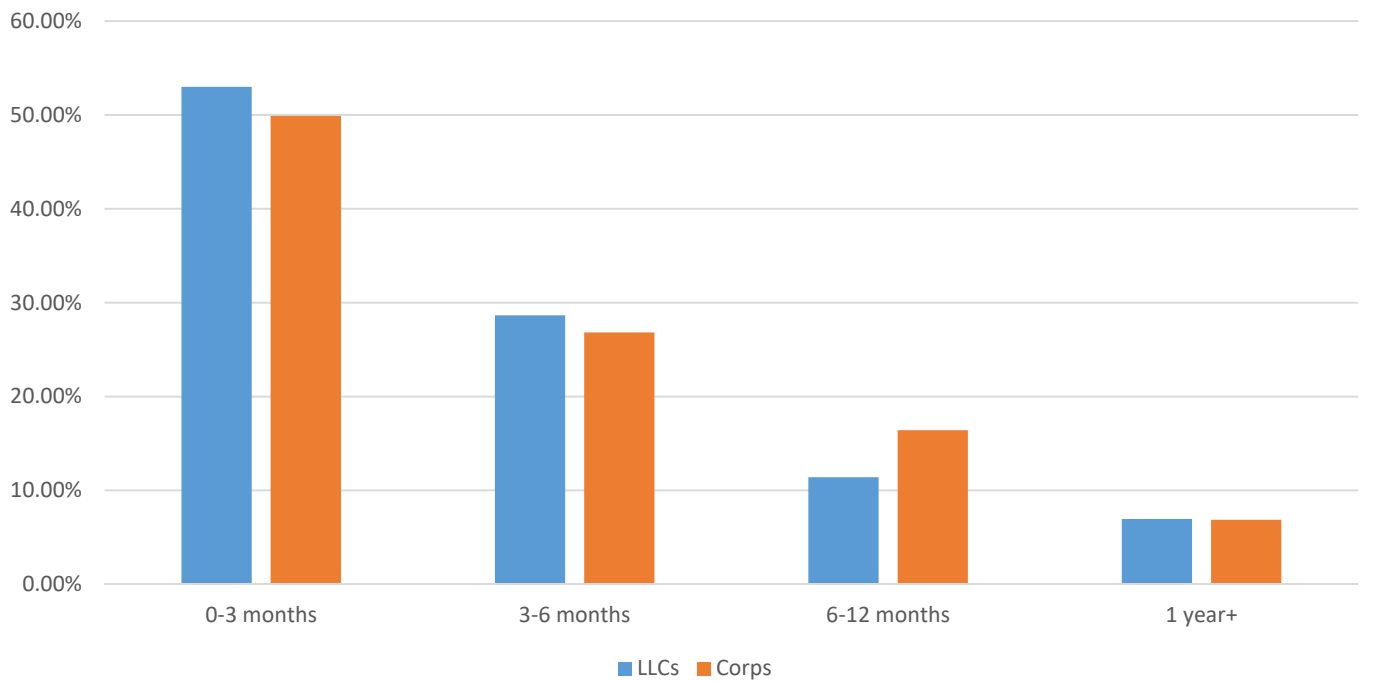
Do you use any standardized tests to determine eligibility for employment?



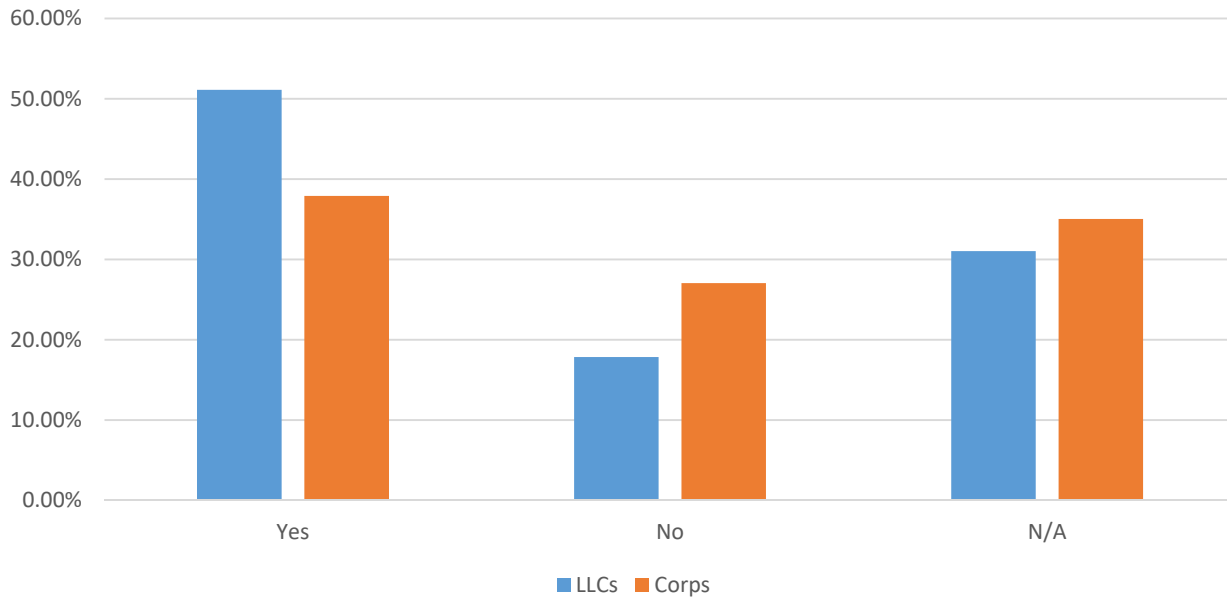
### Do you offer employees on-the-job training, tuition support, or other educational incentives?



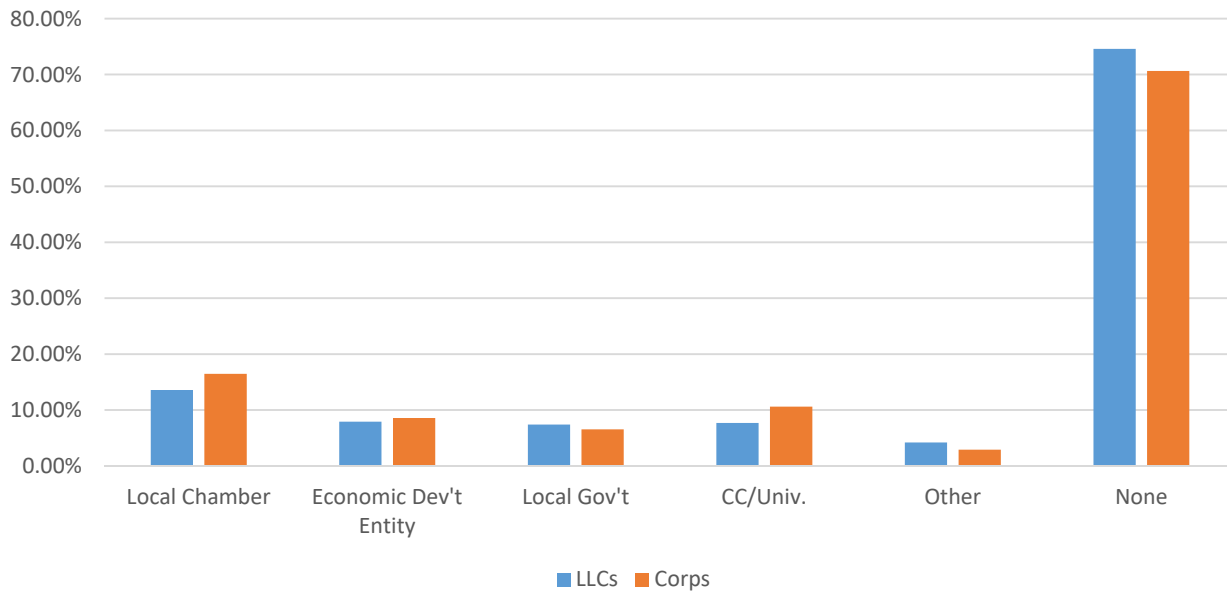
### When you need to hire an employee, how long does it generally take to find an employee qualified for the position?



If you had an educated workforce, would you expand your business in Mississippi?



Did any of the following organizations/entities offer support to you when starting your business? Check all that apply.



# What is most important to your business?

