

**Official Recapitulation
Primary Runoff Election**

Votes cast in the County of Prentiss, Mississippi
on the 23rd day of August 2011.

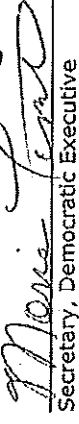
The Democratic Election Commission will prepare three (3) Official Recapitulation Sheets containing the vote of the entire county by precinct. They will forward one copy to Delbert Hosemann, Secretary of State, 401 MISSISSIPPI ST. JACKSON MS 39201, file one copy with the State Executive Committee, file one copy with the Circuit Clerk of the County and keep the third copy for their records.

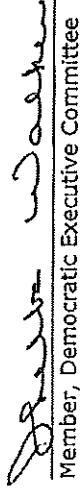
We, the undersigned Democratic Election Commission, hereby certify that the foregoing is a true and complete recapitulation and statement of the results of a Primary Runoff Election held on the 23rd day of August 2011, in the County of Prentiss, Mississippi, and that the foregoing correctly shows the votes cast for each person and for the office set opposite the respective names at said election.

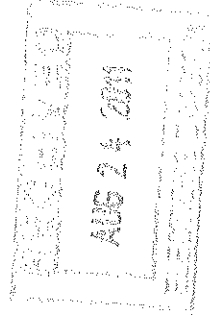
In testimony whereof, witness our hands this 24th day of August 2011.

The County of Prentiss, Mississippi.


Chairman, Democratic Executive


Secretary, Democratic Executive


Member, Democratic Executive Committee



Official Recapitulation Run Off Election for '8/2/2011 - 2011 PRIMARY ELECTION'		The Democratic Election Commission will prepare three (3) Official Recapitulation Sheets containing the vote of the entire county by precinct. They will forward one copy to Delbert Hosemann, Secretary of State, 401 MISSISSIPPI ST. JACKSON MS 39201, file one copy with the State Executive Committee, file one copy with the Circuit Clerk of the County and keep the third copy for their records.										
Votes cast in the County of Prentiss, Mississippi on the 23rd day of August 2011		Names of Election Precincts										
State Of Mississippi-Governor		Galduyn	Blackland	Booneville	Cross Roads	East Booneville	Ingram	Marietta	North Booneville	New Site	Cairo	Thrasher
Johnny L. DuPree	Democrat	165	50	98	69	74	15	58	130	61	31	111
Bill Luckett	Democrat	208	189	428	317	285	84	299	95	212	114	201
Prentiss-Coroner												
Eddie Barnett	Democrat	173	85	231	124	175	44	137	98	119	74	81
Greg Sparks	Democrat	201	168	337	284	214	57	255	138	182	75	239
Prentiss-Tax Assessor												
Steve Eaton	Democrat	306	182	277	318	229	85	181	130	172	92	177
Bob Maddox, Jr.	Democrat	84	74	292	98	166	18	215	108	131	61	152
Supervisor District 1-1st District												
Butch Owens	Democrat	X	X	316	X	X	X	X	X	X	X	147
James Ray Plaxico	Democrat	X	X	253	X	X	X	X	X	X	X	179
Justice Court Judge South-South Judge												
Angela White Pounds	Democrat	278	X	136	X	120	56	230	X	177	X	X
Billy Sartin	Democrat	110	X	255	X	267	48	164	X	126	X	X
Constable North-Constable North												
Sammy D. Henderson	Democrat	X	113	89	245	X	X	X	120	X	68	223
Reed C. Sparks	Democrat	X	142	85	156	X	X	X	113	X	80	100
Constable South-Constable South												
Harry Allen	Democrat	70	X	271	X	263	10	302	X	261	X	X
Rusty Rutherford	Democrat	333	X	120	X	122	97	89	X	38	X	X

Official Recapitulation
Run Off Election for '8/2/2011 - 2011
PRIMARY ELECTION'

The Democratic Election Commission will prepare three (3) Official Recapitulation Sheets containing the vote of the entire county by precinct. They will forward one copy to Delbert Hosemann, Secretary of State, 401 MISSISSIPPI ST. JACKSON MS 39201, file one copy with the State Executive Committee, file one copy with the Circuit Clerk of the County and keep the third copy for their records.

Votes cast in the County of Prentiss, Mississippi on the 23rd day of August 2011.

Names of Election Precincts

	Fusculmbia-New Candler	West Booneville	Wheeler	Hills Chapel-New Hope	TOTAL
State Of Mississippi-Governor					
Johnny L. DuPree	80	183	51	68	1244
Bill Luckett	299	669	228	295	3923
Prentiss-Coroner					
Eddie Barnett	86	288	103	154	1972
Greg Sparks	323	626	187	225	3511
Prentiss-Tax Assessor					
Steve Eaton	214	428	175	167	3133
Bob Maddox, Jr.	194	495	116	215	2419
Supervisor District 1-1st District					
Butch Owens	105	X	X	X	568
James Ray Plaxico	306	X	X	X	738
Justice Court Judge South-South Judge					
Angela White Pounds	X	X	177	X	1174
Billy Sartin	X	X	113	X	1083
Constable North-Constable North					
Sammy D. Henderson	332	416	X	231	1837
Reed C. Sparks	74	475	X	144	1369
Constable South-Constable South					
Harry Allen	X	X	100	X	1277
Rusty Rutherford	X	X	192	X	991